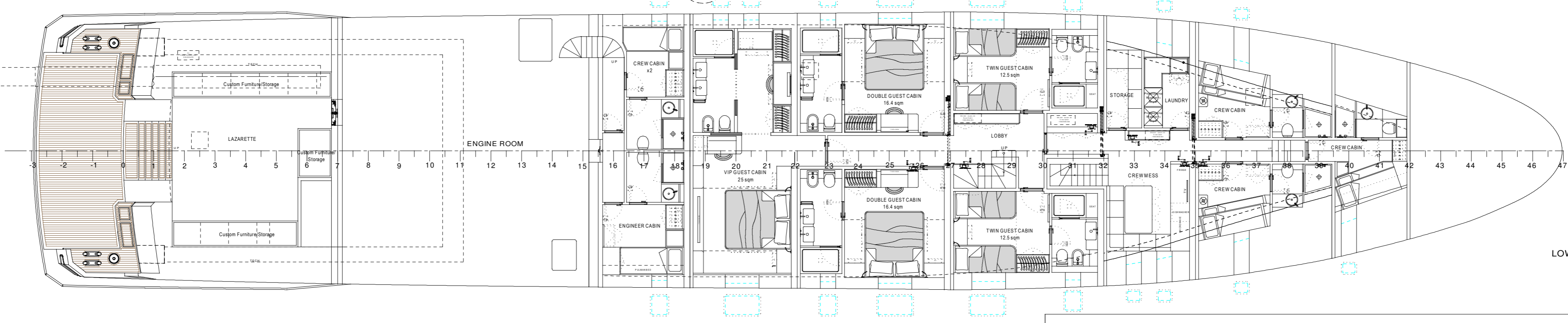
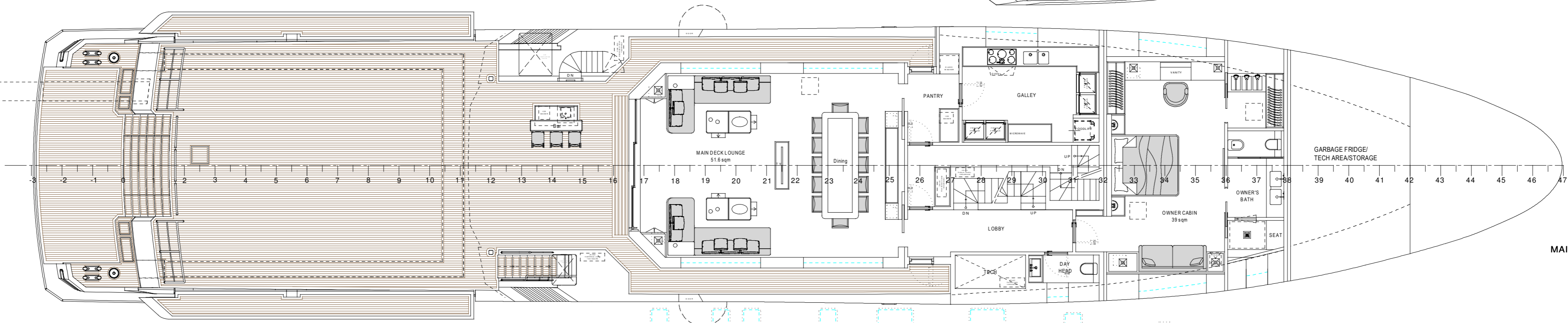
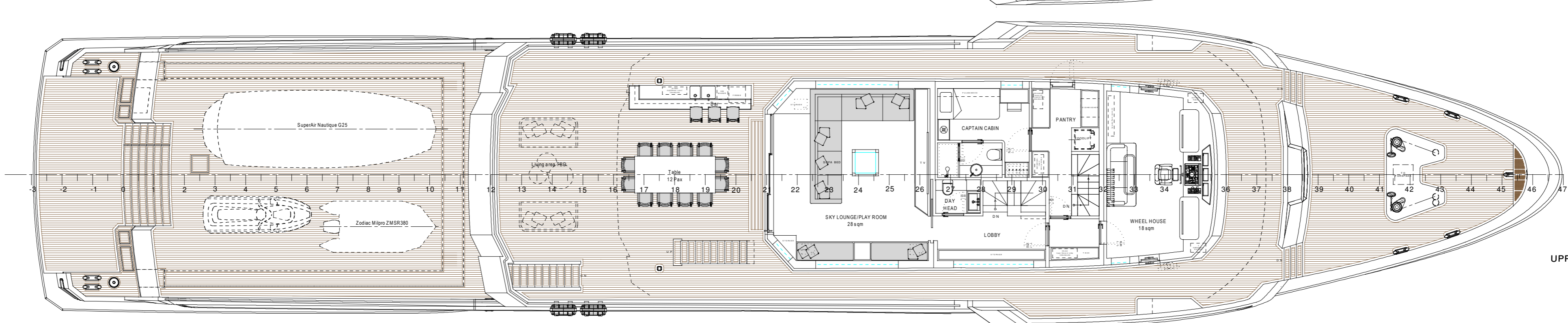
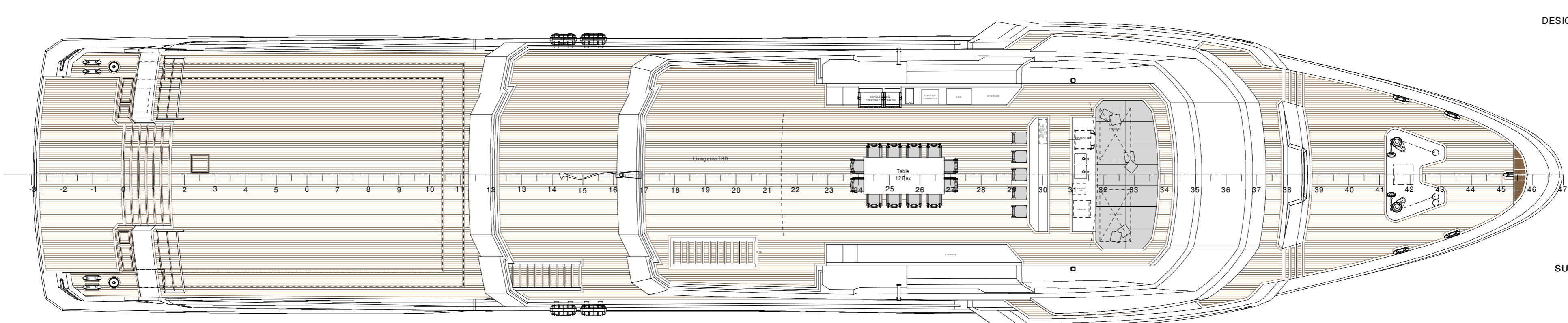
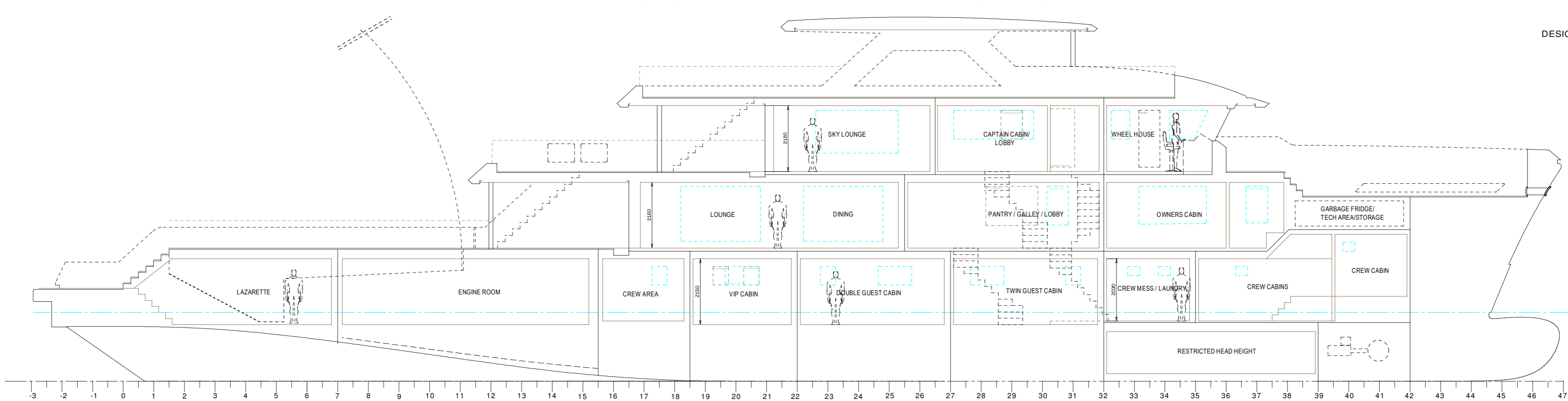
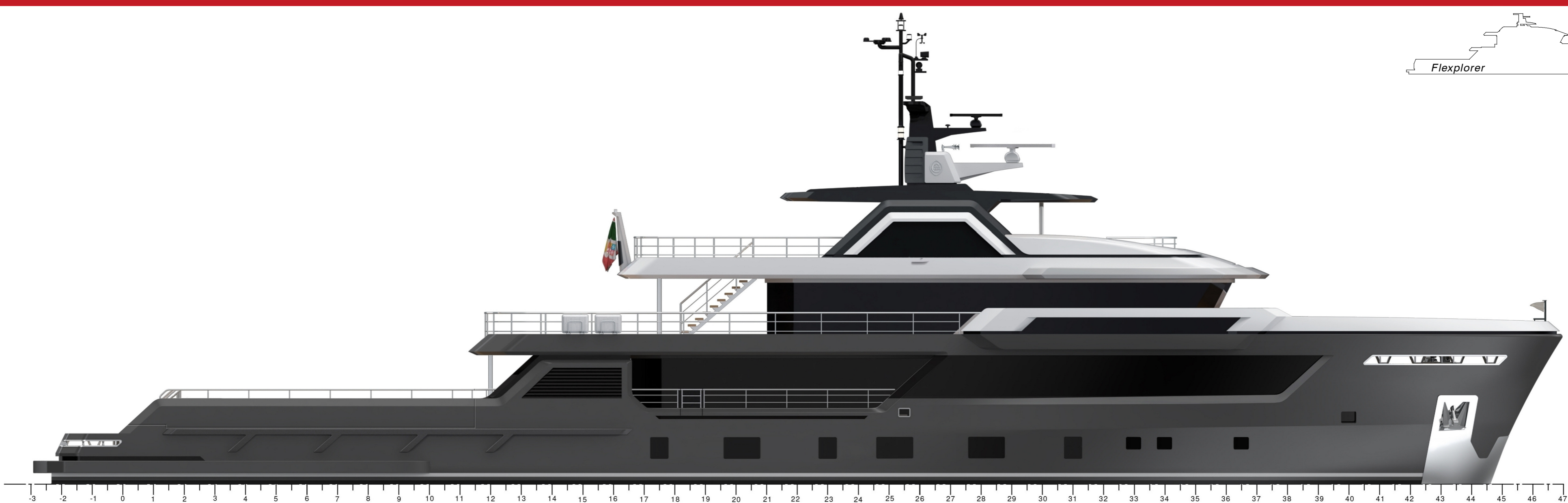
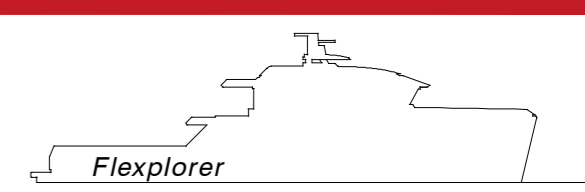


A

B



General Arrangement Plan

Client	CANTIERE DELLE MARCHE	PROJECT	50 m f. Flexplorer
		L.O.A.	49.90m + Max Beam 9.00m
		SCALE	1:100
		SHEET	A1
		REV. 6	30.07.2024
Engineering		Naval Architecture	
HYDROTEC CREATIVE NAVAL ARCHITECTURE Hydro Tec s.p.a. Via S. Maria Maddalena 17/A 47024 Cesena (FC) - Italy		NOTES	
		A - Preliminary B - Executive C - As built	
		A	

A TERMINI DI LEGGE È VIETATA LA COMUNICAZIONE A TERZI, LO SPRETTAMENTO O LA RIPRODUZIONE ANCHE PARZIALE DI QUESTO DISEGNO. ACCORDING TO LAW IT IS STRICTLY FORBIDDEN ANY PARTIAL OR TOTAL COMMUNICATION OR REPRODUCTION OF THIS DRAWING AND SHALL BE PROSECUTED TO THE FULLEST EXTENT OF THE LAW. CONTENTS OF THIS DRAWING ARE PRELIMINARY AND ARE SUBJECT TO CHANGE AS THE PROJECT PROGRESSES.

A

B