

RAW

RECREATIONAL ALL-WEATHER WATERCRAFT



RAW

RECREATIONAL ALL-WEATHER WATERCRAFT

We are setting a new standard for the yachting industry. **Again.**

RAW is a groundbreaking project that redefines yacht design, moving beyond conventional boundaries to offer unparalleled luxury and functionality. This innovative vessel is designed for those who seek ultimate freedom and adventure, providing safe, autonomous, and comfortable voyages over vast distances.

RAW is not just an ordinary yacht: it's a sophisticated and versatile exploration companion, built to tackle the challenges of the open sea and remote routes with ease.

Discover more
on our site



WE ARE EXPLORERS

At **CdM**, we are constantly breaking away from conventional thinking and embracing new challenges. With our extensive expertise in the explorer yacht market, we are driven to innovate, providing discerning individuals with exceptional vessels that stand the test of time.

RAW embodies this philosophy, a yacht born from our unyielding passion for exploration and excellence.





It was already some time that Ennio and I were discussing a **new vessel** that could better fit a **new generation of yachtsmen**, with a fervent desire for freedom and maximum flexibility, regardless of the yacht's size.

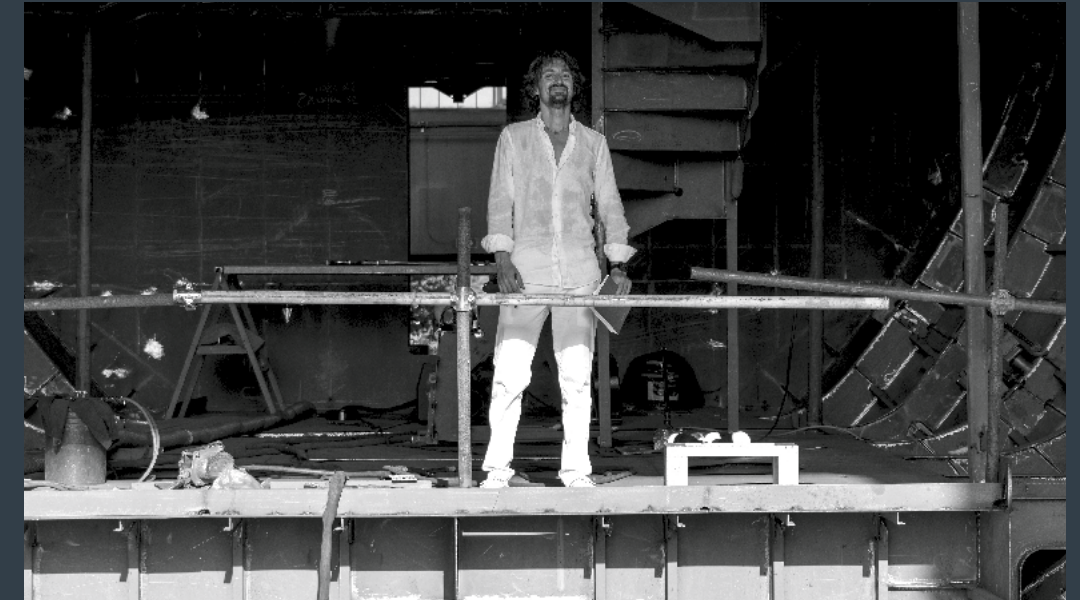
The first conversation about RAW happened after one of my regular tours of the shipyard. Seeing those 499 GT vessels, I realized many were for former **owners of our 105-foot boats**. This inspired the idea for a new 105-foot yacht.

Our primary motivation was to maintain absolute leadership in a market segment that our competitors find difficult to master. A **true explorer yacht**, custom/semi-custom, built with an **incredible value in mind**.

We believe in the flexibility of our vessels. Many clients have downsized from larger yachts, seeking a more intimate and versatile experience. The **105-foot range** offers the **freedom to explore extensively** while retaining the features of larger boats.

Vasco Buonpensiere
Founder & Chief Executive Officer

My team and I have noticed a growing trend toward more informal, discovery-oriented yachting. RAW was an opportunity to create a **rugged explorer with exceptional content for its size**, yet with a recognizable and stylish design.



We wanted **RAW** to convey that powerful, commanding look an **explorer needs** while also being fun and playful. Whether docked in a commercial port or a fancy marina, **RAW** stands out with its **bold design and personality**.

It was extraordinarily challenging to create something worthy of attention in the 105-foot range. RAW offers a **perfect balance** between manageable **size**, reasonable ownership costs, striking **aesthetics**, and ample **onboard space**.

The unique **color** scheme of RAW, inspired by **Search and Rescue Ships**, ensures visibility and safety. It symbolizes the vessel's purpose: exploring and enjoying the beauty of nature while staying safe and being easily **recognizable from miles away**.

Giorgio M. Cassetta
Yacht Designer



RAW 105

The decision to create a **105-foot model** was driven by the need to maintain our leadership in a challenging market segment. A 105-foot yacht offers an unbeatable balance between size and functionality, making it ideal for both first-time owners and seasoned yachtsmen looking for a more manageable yet fully capable vessel.

This size allows **RAW** to deliver all the features and performance expected from larger yachts while remaining versatile and easy to handle.

ON BOARD EXPERIENCE

The first model in the **RAW** series is a three-decker 105-footer with expansive outdoors and welcoming interiors. RAW's profile is imposing, characterized by a **geometrical, contemporary aesthetic**.

STAIRCASE

An ample staircase leads to a swim platform. Apart from its function, the staircase is meant to be an informal lounging spot where to sit sipping a glass of fine wine or simply admiring the view.

SWIM PLATFORM

The swim-platform, a masterpiece of creativity, has been designed as a sort of panoramic balcony enclosed by a low bulwark with handrail. Part of the bulwark is collapsible to allow an easy access to the sea. It's incredibly flexible while being simple at its core in the way that the moving parts work.



UPPER DECK

The Upper deck overhang fully shades and protects the cockpit which is seamlessly connected with both the salon and a large beach area astern.

VENTILATION TRUNK

Another distinctive feature that maximizes the available space in the salon is the placement of the ventilation trunks outside, just behind the fashion plates, ensuring no indoor space is taken up.

MAIN DECK

On the Main deck, to maximize the usability of the large aft cockpit – regardless weather conditions or season –, it can turn into a veranda-like space by closing both sides with floor-to-ceiling glass doors.

FEATURES

An adjective has been turned into a noun that is also an acronym, that synthesizes this project's core characteristics: **R for Recreational, A for All-Weather, W for Watercraft.**

- Power** RAW is a powerful, honest, direct explorer yacht that avoids all stylistic affectation while boasting a very detailed and sophisticated design.
- Design** RAW is an explorer yacht designed and built to cope with any contingency and whose characteristics are always appropriate to every occasion.
- Materials** Most materials used onboard are as raw as possible to emphasize the authenticity of the project and its low environmental impact.
- Limitless** RAW is a robust, functional, comfortable, reliable yacht that puts no limits to its owners' journey plans and entertainment.
- Bold** The intense orange details underline and affirm the yacht's bold character as a bearer of enthusiasm, joy and energy.
- Layout** Among RAW's unique characteristics, one surely stands out: the capacity to carry up to two 5m tenders in the bow area is a mind-blowing achievement for a vessel of 40 meters, it's unbelievable on a 30 m. That is due to the careful polishing of the layout, which went through a number of loops to get to where it is.
- Technical Spaces** Another important feature under the functionality aspect is that all technical spaces and storage areas on board were incorporated into the design from day 0. That allowed to create a composition that makes the best out of her few constraints rather than being crippled by them.
- Drone and Helicopter** Last but not least, the cherry on top is the drone and small helicopter landing capability... on a 30m yacht!



CONFIGURATION AND LAYOUT

The **functionality of the layout** and the careful use of space and volumes allow for very spacious areas available to the owners and their guests on all decks, both inside and outside. The possibility to have a range of water toys and sports equipment on board, properly stored, offers virtually unlimited leisure options. The interior configuration of **RAW** is **highly customizable** according to the owner's requests and lifestyle.



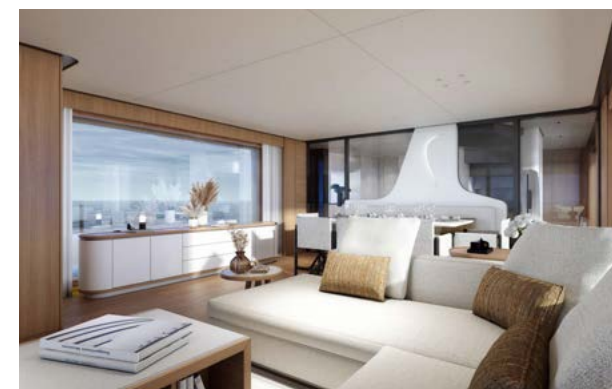
Upper deck stern terrace



Cockpit - swim platform



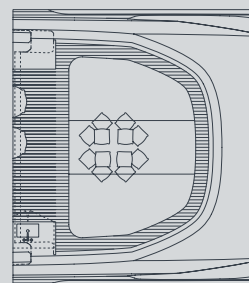
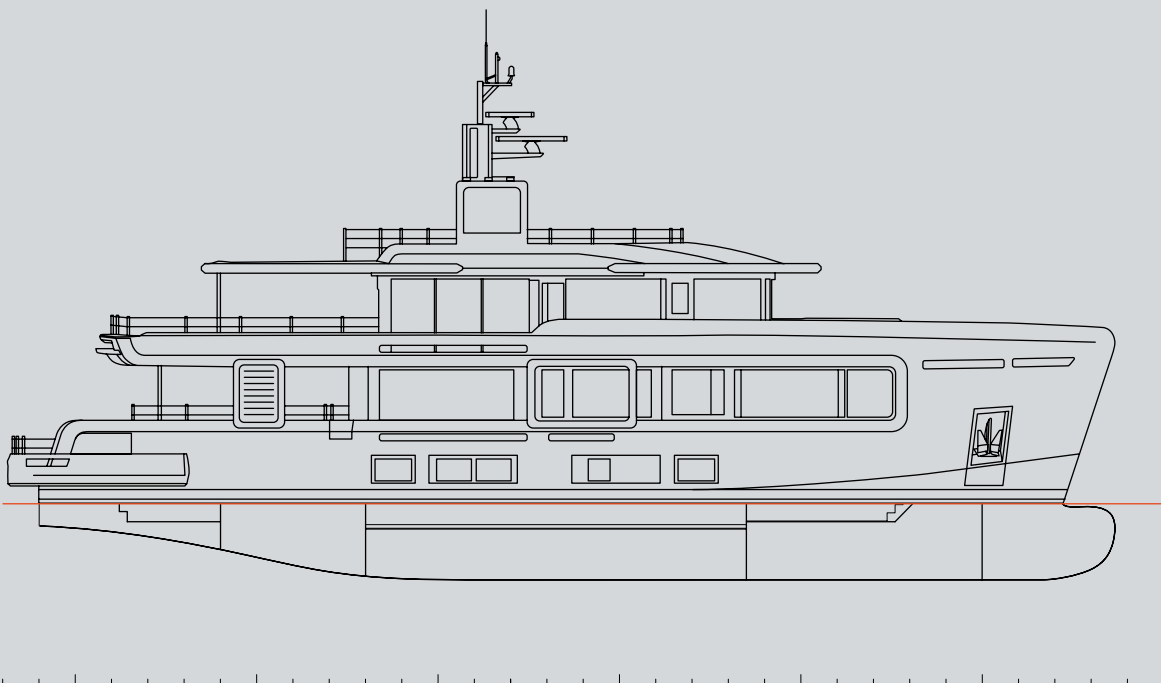
Sky lounge terrace



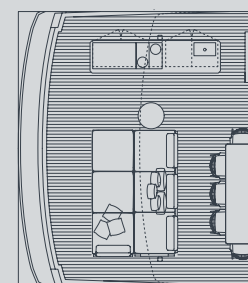
Main deck salon

GENERAL ARRANGEMENTS

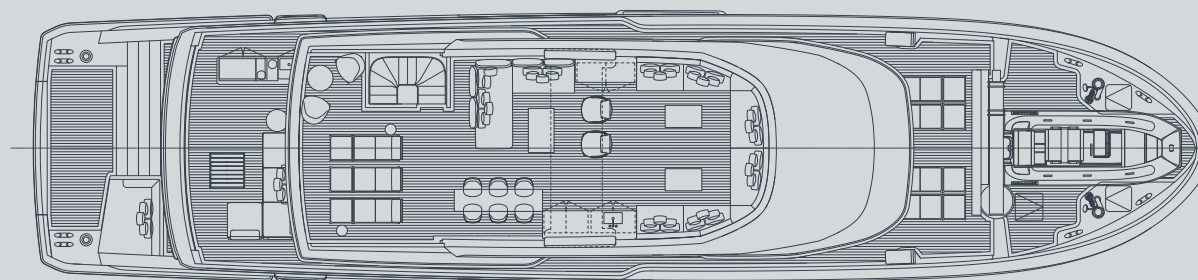
RAW is engineered to exceed the highest standards of performance, reliability, and luxury. Every aspect, from the smart use of space to the cutting-edge technology, showcases our dedication to designing a yacht that is both **versatile and commanding.**



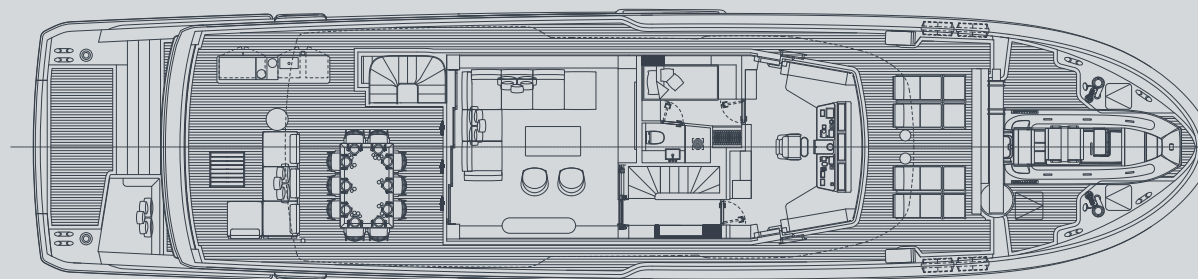
TOP DECK
Opt. 1



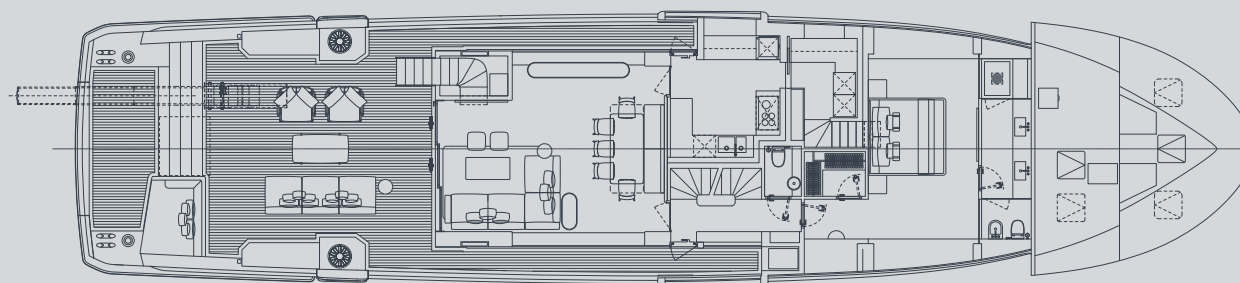
UPPER DECK
Opt. 1



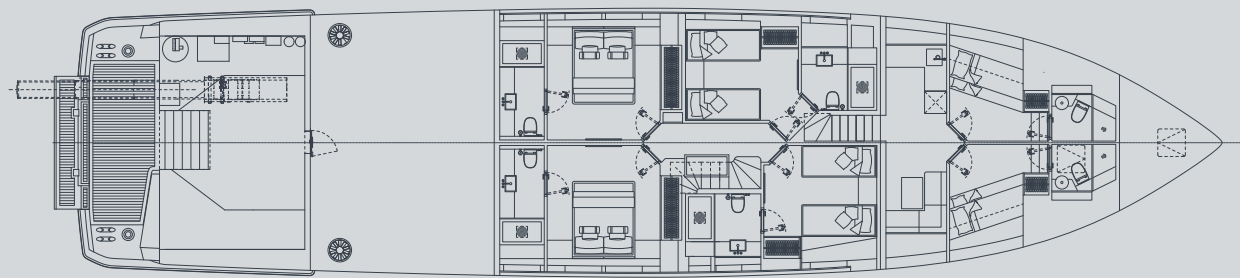
TOP DECK



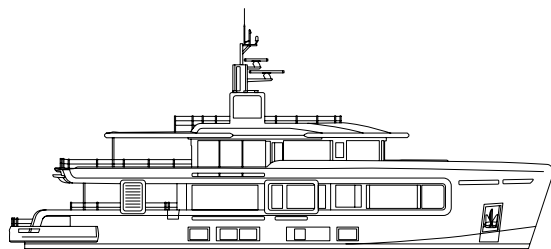
UPPER DECK



MAIN DECK



LOWER DECK



RAW 105

DIMENSIONS	Meters	Feet
Length overall	32	105
Waterline length	31	101,7
Max beam	7,2	23,6
Depth, amidship	3,9	12,8
Draught, full load under the keel	2,35	7,7
Displacement, full load	254 t	

CAPACITY	Liters	Gallons
Diesel oil	39' 500	10' 434
Urea	1' 700	449
Fresh water	5' 300	1' 400
Black water	800	211
Grey water	6' 000	1' 585
Clean oil / Dirty oil	600 / 500	158 / 132
Bilge	850	224

PROPULSION	kW
Engines	2xCaterpillar C18 ACERT (533kW @2' 100rpm) Rating C
Gearbox	2x ZF W650L - gear ratio 4,057:1
Generators	2x55 kW Kohler
Bow thruster	52 kW
Stabilizer fins	Electrical, Zero Speed

PERFORMANCE	Knots
Maximum speed	13,5
Cruise speed	11,5
Range	4' 200 nm @ 10 knots

ACCOMMODATION	Cabins
Passengers	10 (+2 Pullman Bed) p / 5 Cabins
Crew	5 / 3 Cabins

CLASSIFICATION	C * HULL • MACH Y



CANTIERE
DELLE MARCHE

explorer's attitude

